



Green Gates, Furzehill Wimborne, Dorset, BH21 4HD

A bright and spacious 5 bedroom detached chalet style home standing on a large, westerly facing garden plot of about half an acre, in this sought after village of Furzehill, just over a mile from Wimborne town centre. The gardens are a particular feature of the property, with a detached double garage and an additional car port.

PRICE GUIDE: £850,000
FREEHOLD



Christopher
Batten

in association with

Winkworth



The property benefits from light and well proportioned rooms, large sitting/dining room, family snug, 2 ground floor bedrooms, kitchen/breakfast room, cloakroom, 3 first floor bedrooms and study, and a family bathroom. It is connected to all mains services, with a gas central heating system and UPVC double glazing.

A front door leads through to reception hall featuring engineered wood flooring, understairs storage cupboard and a cloakroom.

There is a bright and spacious dual aspect sitting/dining room with patio doors to the delightful gardens, this room enjoys a lovely outlook. Again, there is a bright and spacious dual aspect snug with a feature wood burner and patio doors to the gardens. There are 2 ground floor bedrooms (one of which has a shower cubicle and fitted wardrobes).



 3
  5
  1



The kitchen/breakfast room comprises a range of units, oven, Neff hob with extractor over, integrated fridge/freezer, space for dishwasher, breakfast bar seating for 4, tiled floor, and a door to a side lobby/boot room ideal for laundry essentials, and door to the driveway.

From the reception hall, stairs lead to the first floor landing with views over the front aspect. Bedroom 1 enjoys lovely views over the rear garden, with fitted wardrobes, and double doors lead through to a useful walk-in storage area which could easily be converted to a dressing room (with access to loft). Bedroom 2 is a good sized double bedroom with views over the gardens and a fitted wardrobe. There are 2 further bedrooms (one of which is currently used as a study/music room) both with Velux windows. The family bathroom has a bath (with shower over and glass side screen), wash basin, and WC.

To the front, there is a driveway providing ample off road parking, with a lawn area with planted borders, and further well stocked flower beds to the front of the property.

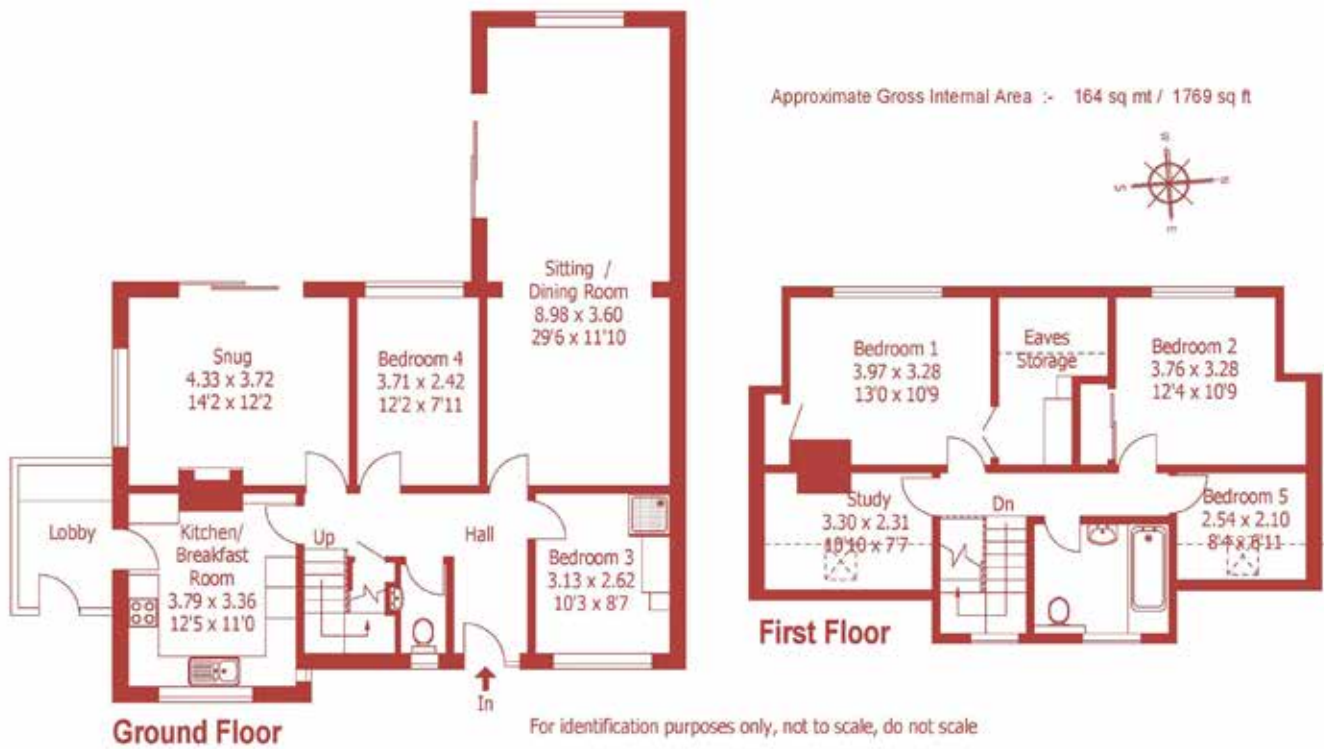


There is a detached double garage (with wooden side door, power and lighting) with parking behind and a bin storage area. To the side of the property, there is a car port (with power), currently used for bedding plants as well as additional parking, and the rear section serves as a wood store.

The westerly facing rear garden is a particular feature of the property, with an extensive garden patio ideal for al fresco dining, lawns threaded by paved pathways, thoughtfully placed pergolas, mature trees, vibrant shrubs, raised vegetable beds, fruit cages, greenhouse, garden shed, and a summerhouse enjoying a paved seating area with a pond. The gardens are worthy of note.

Location: Furzehill is a popular village set just over a mile from Wimborne town centre, with The Stocks Inn pub/restaurant and a busy post office/shop. Dumpton Preparatory School is situated on the edge of the village and there is easy access to first schools at Gaunts Common and Witchampton, Allenbourn Middle School, and Queen Elizabeth's School at Pamphill.





DISCLAIMER:

Winkworth wishes to inform prospective buyers that these particulars are a guide and act as information only. All our details are given in good faith and believed to be correct at the time of issue but they don't form part of an offer or contract. No Winkworth employee has authority to make or give any representation or warranty in relation to this property. All fixtures and fittings, whether fitted or not are deemed removable by the vendor unless stated otherwise and room sizes are measured between internal wall surfaces, including furnishings.



The major coastal towns of Poole and Bournemouth, both of which have mainline rail links to London Waterloo, are within 30 minutes' drive.

Directions: From Wimborne, proceed north on the B3078 towards Cranborne, turning right into the village of Furzehill. Green Gates can be found on the left hand side, just before the turning on the right to Crofton.

Council Tax: Band F. EPC Rating: Band D







properties@christopherbatten.co.uk
01202 841171

15 East Street | Wimborne
Dorset | BH21 1DT



Christopher
Batten

in association with

Winkworth